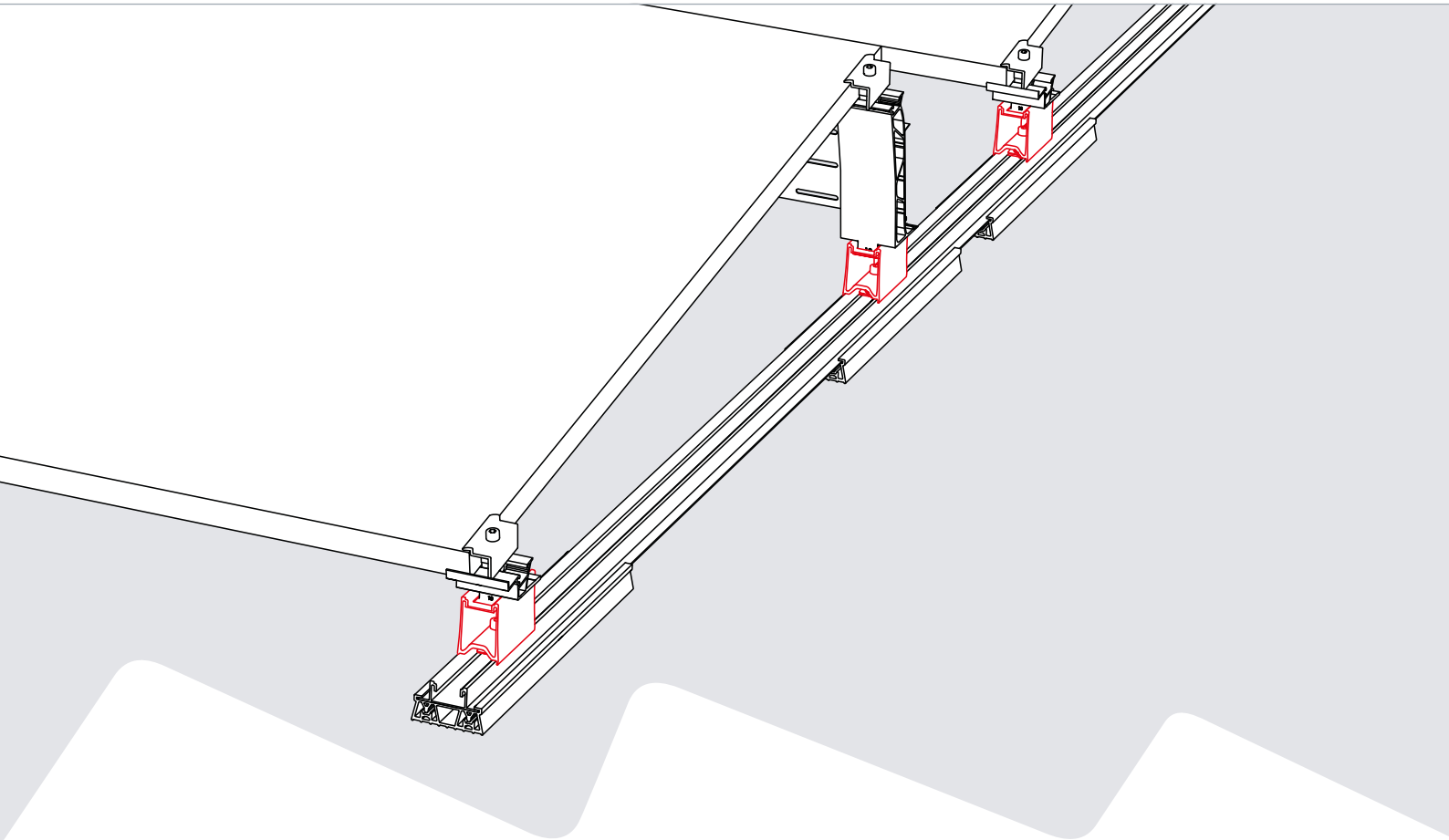




Connecting Strength



Assembly Manual

Elevation with RailUp

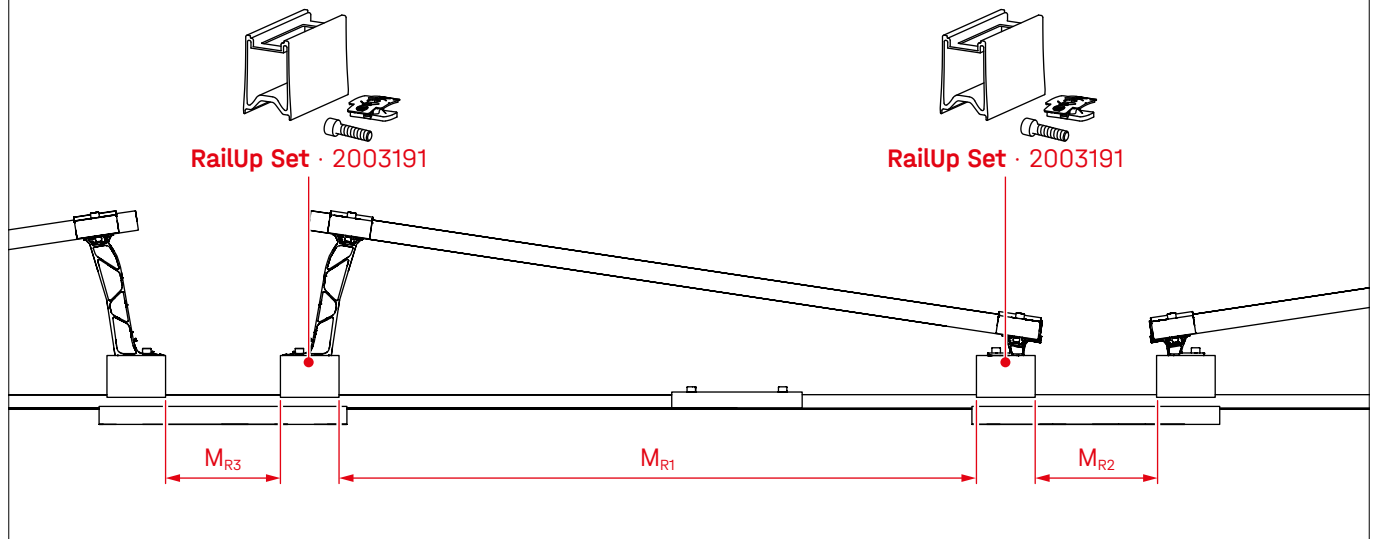
D-Dome 6 and S-Dome 6
Classic / Classic LS

Assembly

This manual complements our existing Dome 6 Classic and Classic LS systems by providing an additional installation option. For a professional and safe installation, please follow the detailed [installation instructions](#).

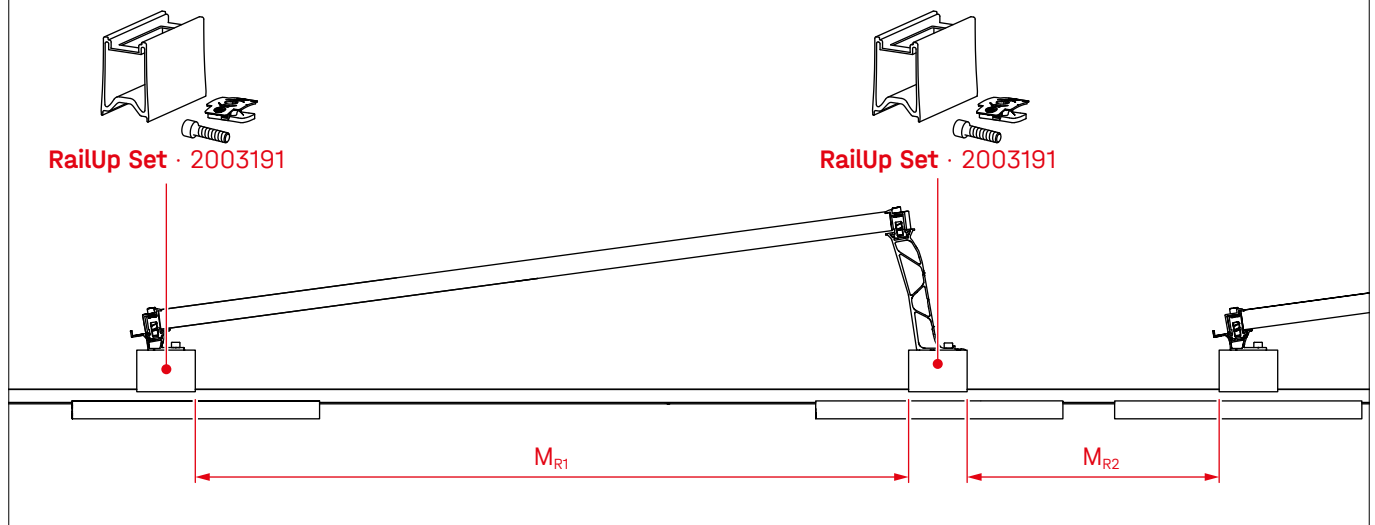
1a Elevation with RailUp for D-Dome 6 Classic / Classic LS

- ! K2 Base automatically calculates the dimensions M_{R1} / M_{R2} / M_{R3} and outputs them in the assembly plan. These must be adhered to during assembly.

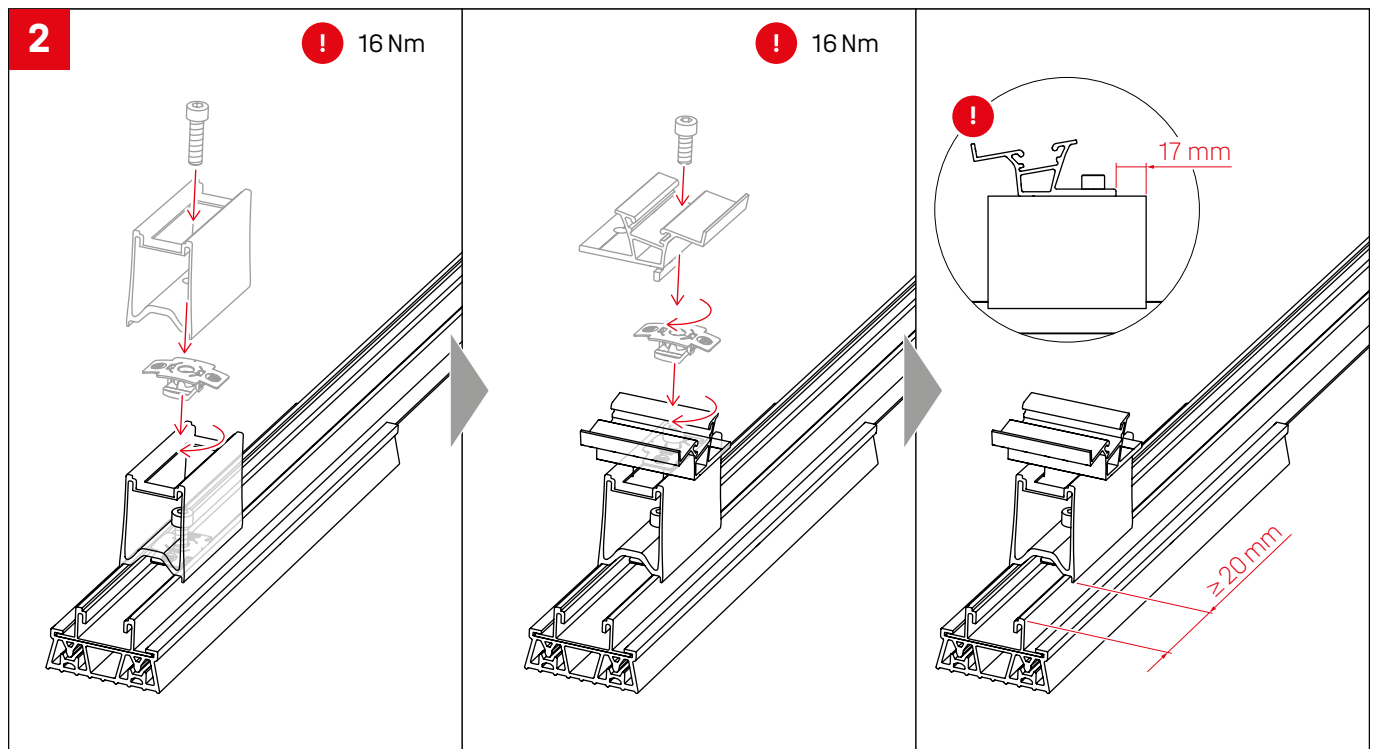


1b Elevation with RailUp for S-Dome 6 Classic / Classic LS

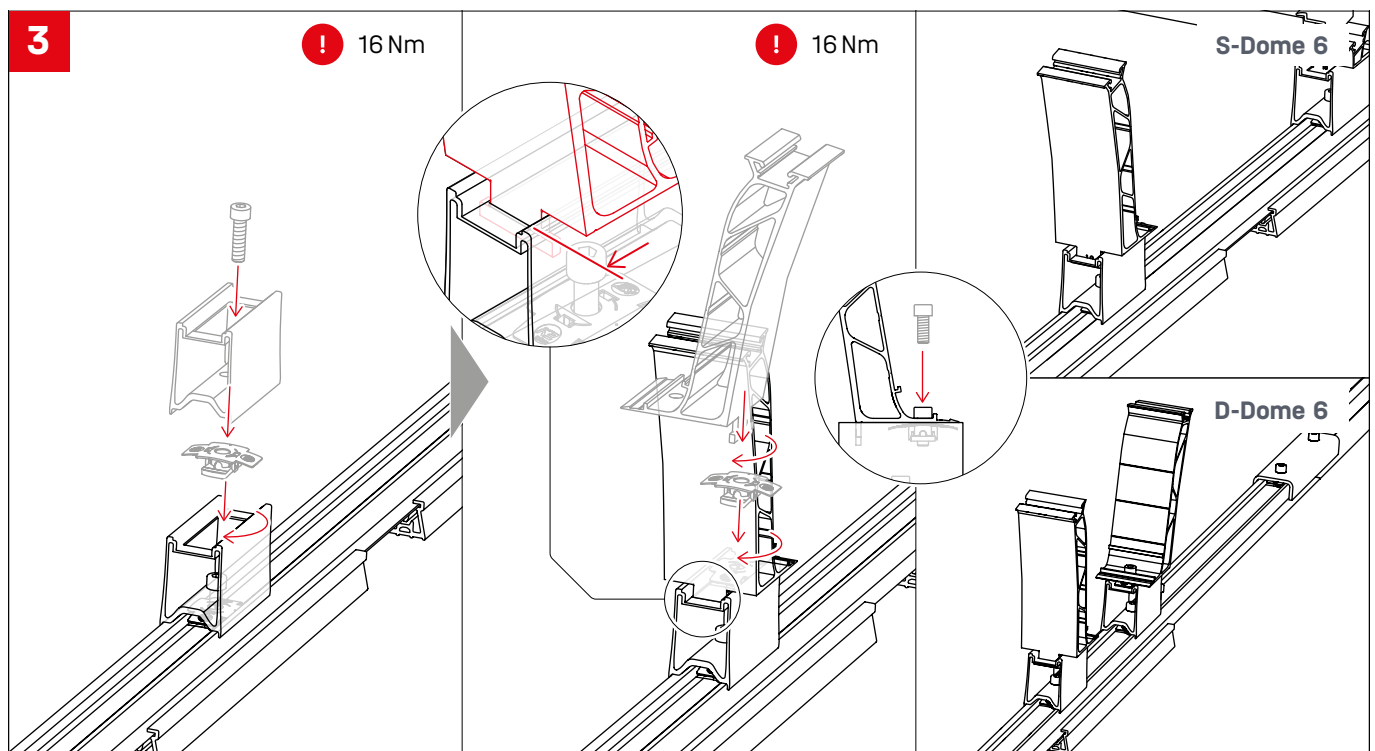
- ! K2 Base automatically calculates the dimensions M_{R1} / M_{R2} and outputs them in the assembly plan. These must be adhered to during assembly.



RailUp under SD



RailUp under Peak





Connecting Strength

Thank you for choosing a K2 mounting system.

Mounting systems from K2 Systems are quick and easy to install. We hope these instructions have helped. Please contact us with any questions or suggestions for improvement. Our contact data:

- k2-systems.com/en/contact
- **Service Hotline: +49 7159 42059-0**

Our General Terms of Business apply. Please refer: k2-systems.com

K2 Systems GmbH

Haldenstraße 1 · 71272 Renningen · Germany
+49 (0) 7159 - 42059 - 0 · info@k2-systems.com · k2-systems.com

RailUp Elevation Assembly EN V1 | 0825 · Subject to change
· Product illustrations are exemplary and may differ from the original.