


Pos.No.	Designation	optional
1	Dome 6.10 Peak	
2	Dome 6.10 SD	
3	DomeClamp EC Set	
4	DomeClamp MC Set	
5	Dome FlatConnector Set	x
6	BasicRail 22	
7	BasicClip	
8	BasicLock 22 Set	
9	S-Dome 6.10 Windbreaker	
10	MK2	
11	CableManager	x
12	Self tapping screw	
13	Socket head bolt serrated ISO 4762 - M8x20	
14	Module	

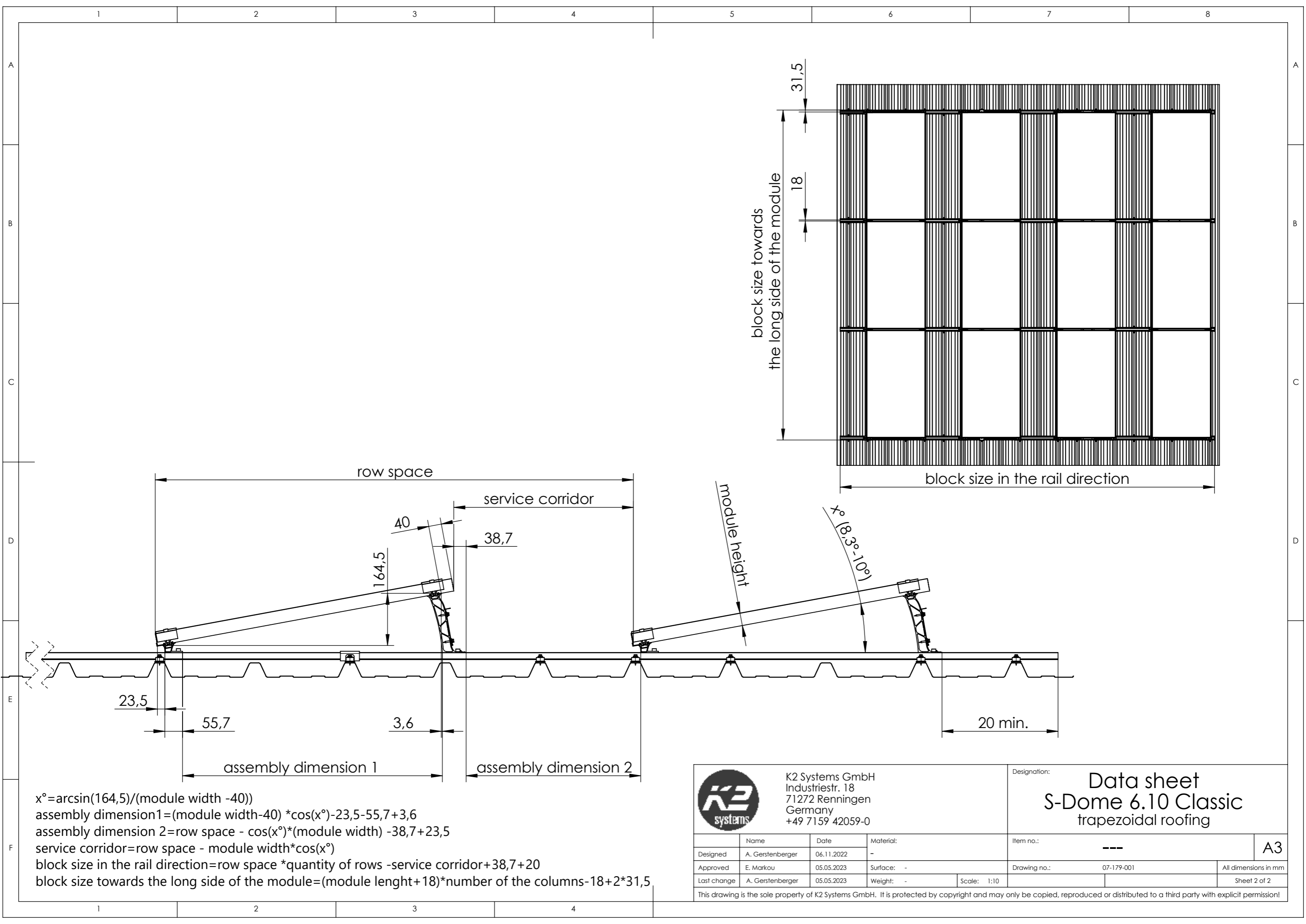


K2 Systems GmbH
Industriestr. 18
71272 Renningen
Germany
+49 7159 42059-0


Designation: **S-Dome 6.10 Classic trapezoidal roofing**

	Name	Date	Material:	Item no.: ---	A3
Designed	A. Gerstenberger	06.11.2022	-		
Approved	E. Markou	05.05.2023	Surface: -	Drawing no.: 07-179-001	All dimensions in mm
Last change	A. Gerstenberger	05.05.2023	Weight: -	Scale: 1:20	Sheet 1 of 2

This drawing is the sole property of K2 Systems GmbH. It is protected by copyright and may only be copied, reproduced or distributed to a third party with explicit permission!



$x^\circ = \arcsin(164,5) / (\text{module width} - 40)$
 assembly dimension 1 = $(\text{module width} - 40) * \cos(x^\circ) - 23,5 - 55,7 + 3,6$
 assembly dimension 2 = $\text{row space} - \cos(x^\circ) * (\text{module width}) - 38,7 + 23,5$
 service corridor = $\text{row space} - \text{module width} * \cos(x^\circ)$
 block size in the rail direction = $\text{row space} * \text{quantity of rows} - \text{service corridor} + 38,7 + 20$
 block size towards the long side of the module = $(\text{module length} + 18) * \text{number of the columns} - 18 + 2 * 31,5$


K2 Systems GmbH
 Industriestr. 18
 71272 Renningen
 Germany
 +49 7159 42059-0

Name	Date	Material:
Designed A. Gerstenberger	06.11.2022	-
Approved E. Markou	05.05.2023	Surface: -
Last change A. Gerstenberger	05.05.2023	Weight: -

Scale: 1:10

Designation: **Data sheet**
S-Dome 6.10 Classic
 trapezoidal roofing

Item no.:	---	A3
Drawing no.:	07-179-001	All dimensions in mm
		Sheet 2 of 2

This drawing is the sole property of K2 Systems GmbH. It is protected by copyright and may only be copied, reproduced or distributed to a third party with explicit permission!