



Assembly Manual

WallPV MultiRail

FacadeClamp



Connecting Strength

k2-systems.com

Content

• Tools overview	3
• General safety information	4
• The following guidelines apply	5
· Facade requirements	5
· Important mounting instructions	5
• Components	6
· Assembly on trapezoidal sheet metal	6
· Assembly on corrugated sheet metal – additional item	8
• Assembly	9
• Optional – TerraGrif QL	15

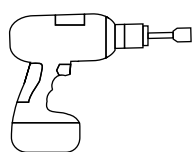
Quality tested - multiple certifications

K2 Systems stands for secure connections, highest quality and precision. Our customers and business partners have known that for a long time. Independent institutes have tested, confirmed and certified our capabilities and components.

Please find our quality and product certificates under:

k2-systems.com

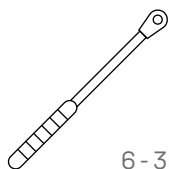
Tools overview



6 mm



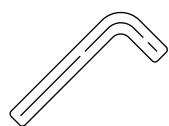
8 mm



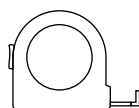
6 - 35 Nm
(4,5 - 22,2 lb-ft)



6 mm



6 mm



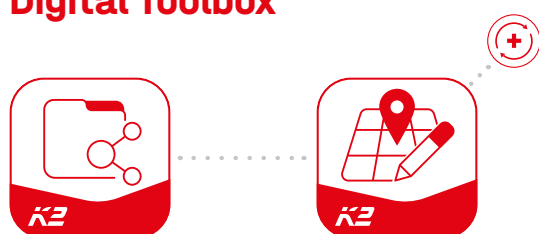
≥ 3,0 m



≥ 6,0 m



Digital Toolbox



Do you already know our digital services? Use our K2 DocuApp now and record the first important data directly at the customer or project site.

Simply transfer the data to our online planning software K2 Base. Here you can plan your project easily, safely and quickly. You receive a detailed project report with assembly plan and static report. The K2+ interface enables seamless project data transfer to the planning tools of well-known inverter manufacturers or yield planning tools.

With the K2 DocuApp, project documentation is done quickly and easily – without any annoying paperwork.

Get started and register now:

docuapp.k2-systems.com



base.k2-systems.com



General safety information

Please note that our general mounting instructions must be followed at all times and can be viewed online at [k2-systems.com](https://www.k2-systems.com)

- The equipment may only be installed and operated by qualified and adequately trained installers.
- Prior to installation, ensure that the product complies with on-site static loading requirements. For WallPV systems, the load-bearing capacity of the facade must always be checked.
- National and local building regulations and environmental requirements must be adhered to.
- Compliance with health and safety regulations, accident prevention guidelines and applicable standards is required.
 - Protective equipment such as safety helmet, boots and gloves must be worn.
 - Facade works must be in accordance with local regulations and must utilise fall protection safeguards when working height exceeds 3m.
 - At least two people must be present for the duration of the installation work in order to provide rapid assistance in the event of an emergency.
- K2 mounting systems are continuously developed and improved and the installation process may thereby change at any time. Prior to installation consult our website at [k2-systems.com](https://www.k2-systems.com) for up-to-date instructions. We can send you the latest version on request.
- The assembly instructions of the module manufacturer must be adhered to.
- Equipotential bonding/grounding/earthing between individual parts is to be performed according to country specific standards, as well as national laws and regulations.
- At least one copy of the assembly instructions should be available on site throughout the duration of the installation.
- Failure to adhere to our general safety and assembly instructions and not using all system components, K2 is not liable for any resulting defects or damages. We do not accept liability for any damage resulting in the use of competitor's parts. Warranty is excluded in such cases.
- German law shall apply excluding the UN Convention on CISG. Place of venue is Stuttgart. Our General Terms of Business apply.
- If all safety instructions are adhered to and the system is correctly installed, there is a product warranty entitlement of 12 years! We strongly recommend reviewing our terms of guarantee, which can be viewed at [k2-systems.com](https://www.k2-systems.com). We will also send this information on request.
- Dismantling of the system is performed in reverse order to the assembly.
- K2 stainless steel components are available in different corrosion resistance classes. Each structure or component must be carefully checked for possible corrosion exposure.

The following guidelines apply



This system can be used without further testing by K2 systems under the following standard conditions. It is also suitable for higher requirements, however if a value exceeds the standard conditions, please contact K2 Systems.



Facade requirements

- The sufficient holding force of the facade cladding at the support or substructure must be verified on site.
- Thickness trapezoidal sheet metal or corrugated sheet metal
 ≥ 0.4 mm steel or ≥ 0.5 mm aluminium
- Sheet quality steel at least S235 acc. DIN EN 10025-1
- Minimum tensile strength for aluminium
 165 N/mm^2
- High crest width ≥ 22 mm, flush area surround hole: ≥ 20 mm
- High bead radius for corrugated sheet metal: $r = 22 - 45$ mm

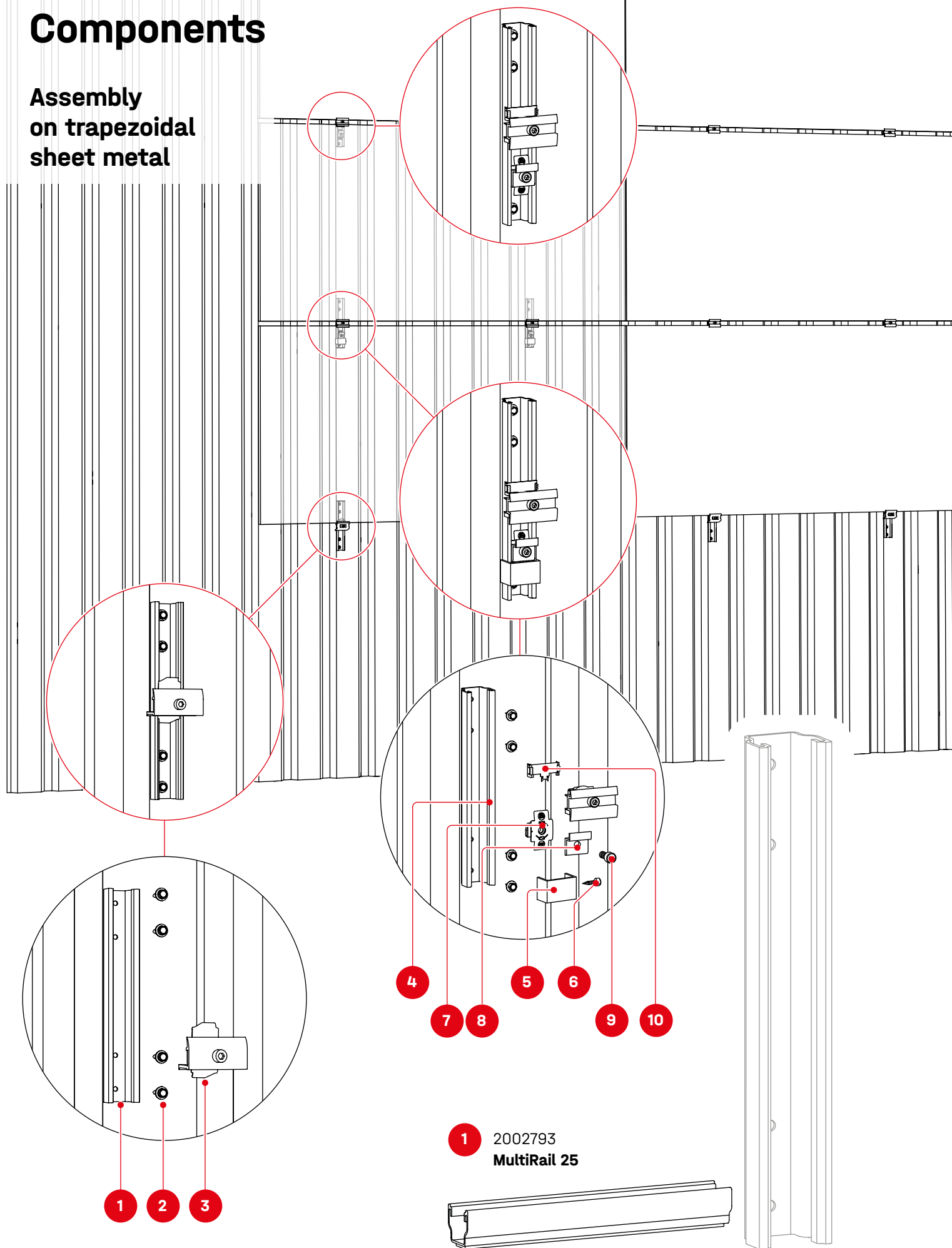


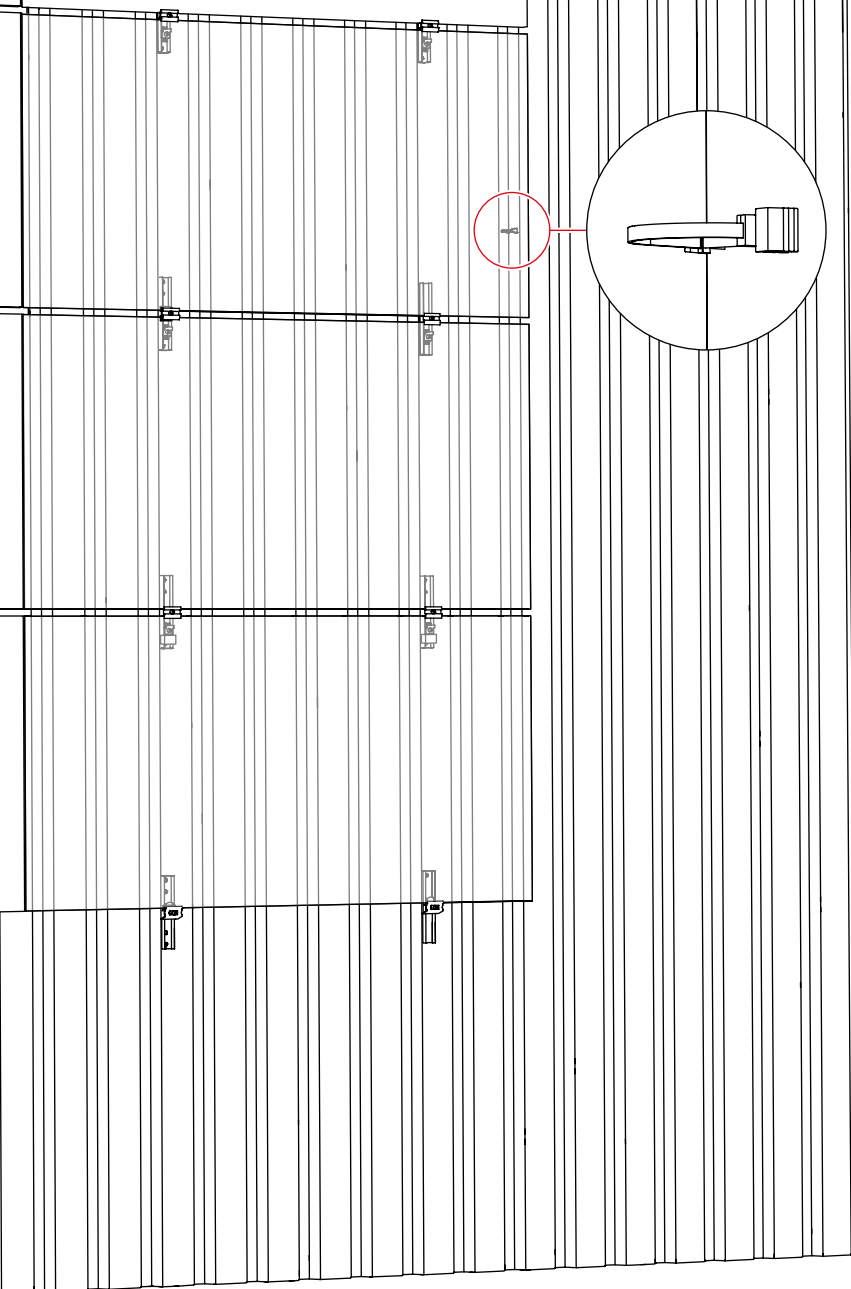
Important mounting instructions

- On-site general standards and regulations for lightning protection must be observed and consultation with a specialist to create a lightning protection concept is recommended (use lightning protection clamp if necessary). It should be noted that the installation direction is from bottom to top. Country-specific regulations must be observed.
- After 13.6 m of modules installed in the direction of the high crest a thermal separation must be made. Fire protection regulation may specify a value less than 13.6 m and must be adhered to. The distance between MultiRails in the direction of the high crests/high wave must be at least 30 mm.
- If the trapezoidal sheet is fastened with storm washers, please do not fasten the MultiRails on the storm washers! Spacing must be measured beforehand.
- Fasten the MultiRails to corrugated or trapezoidal sheet metal with thin sheet metal screws approved by the building authorities.
- Horizontal distance between the short sides of the modules must be at least 5 mm
- Min. 50 mm mounting distance from the end of the rail to the module frame
- The country-specific requirements for the modules when mounted on the facade must be observed.
- The country-specific rules for fire protection on the facade must be observed. If necessary, the system must be assessed by a fire protection expert.
- The country-specific rules for rear ventilation of the facade must be observed.

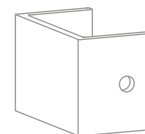
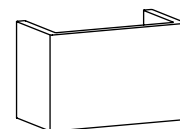
Components

Assembly
on trapezoidal
sheet metal





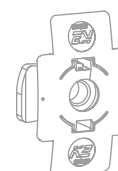
- 5** 2004289
Rail AntiSlip Clip



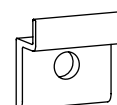
- 6** 2004432
Self-tapping metal screw
5,5 × 19



- 7** 1001643
MK2 insertion nut with clip,
Stainless steel



- 8** 2004287
Facade Module Support



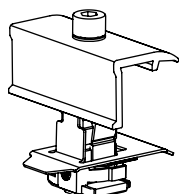
- 9** 2001729
Hexagonal socket head cap
screw M8×20



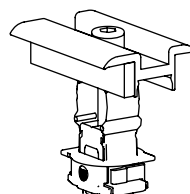
- 2** 1005207
Thread-forming metal screw
6×25



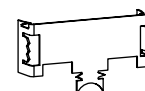
- 3** 2004545
K2 Clamp EC 25-40, black



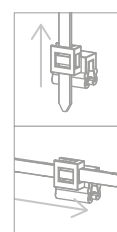
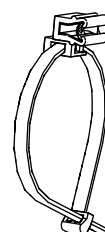
- 4** 2004548
Facade Clamp MC 25-40 Set,
black



- 10** 2004231
TerraGrif QL

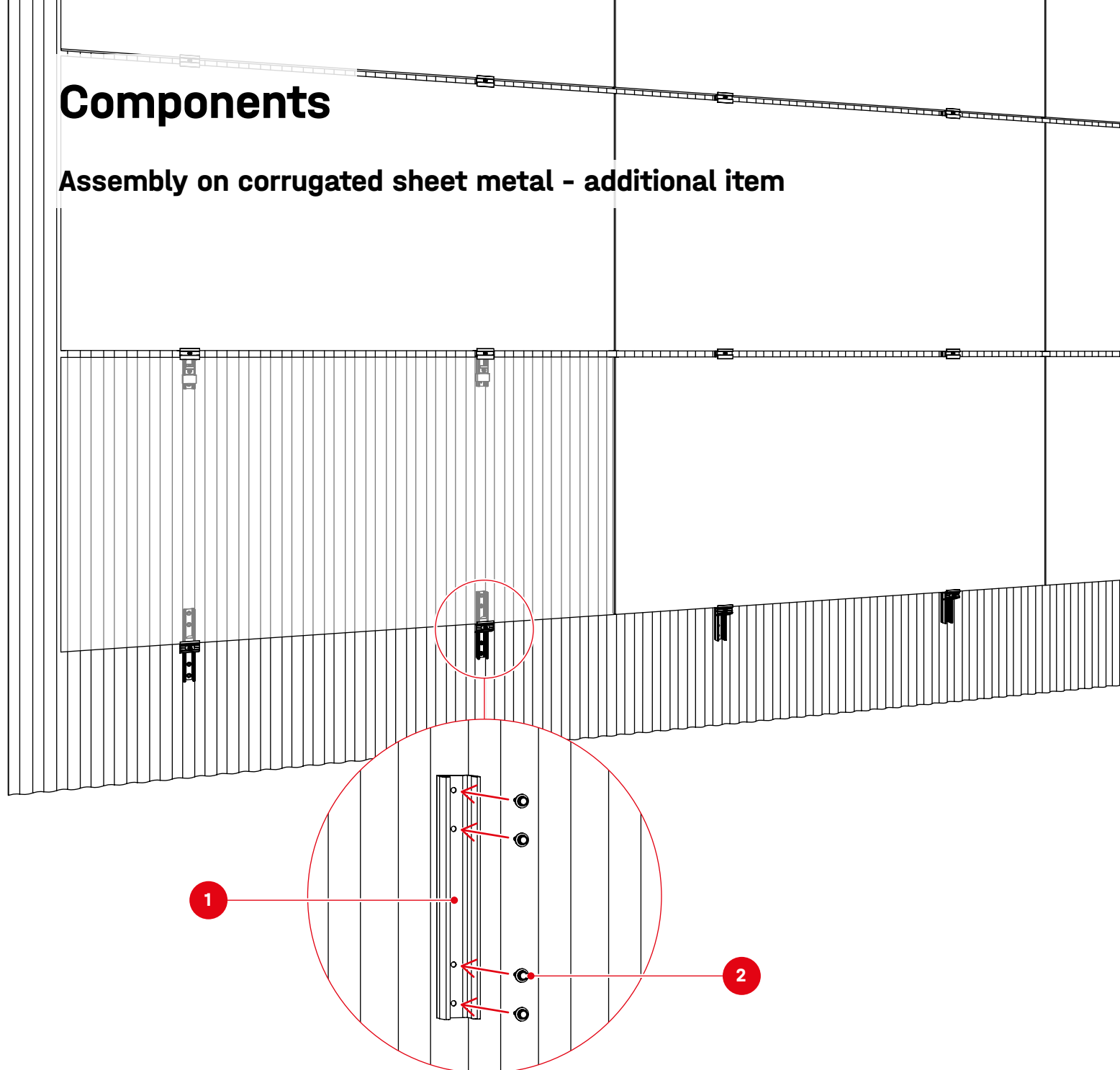


- 2002870
Cable Manager



Components

Assembly on corrugated sheet metal - additional item

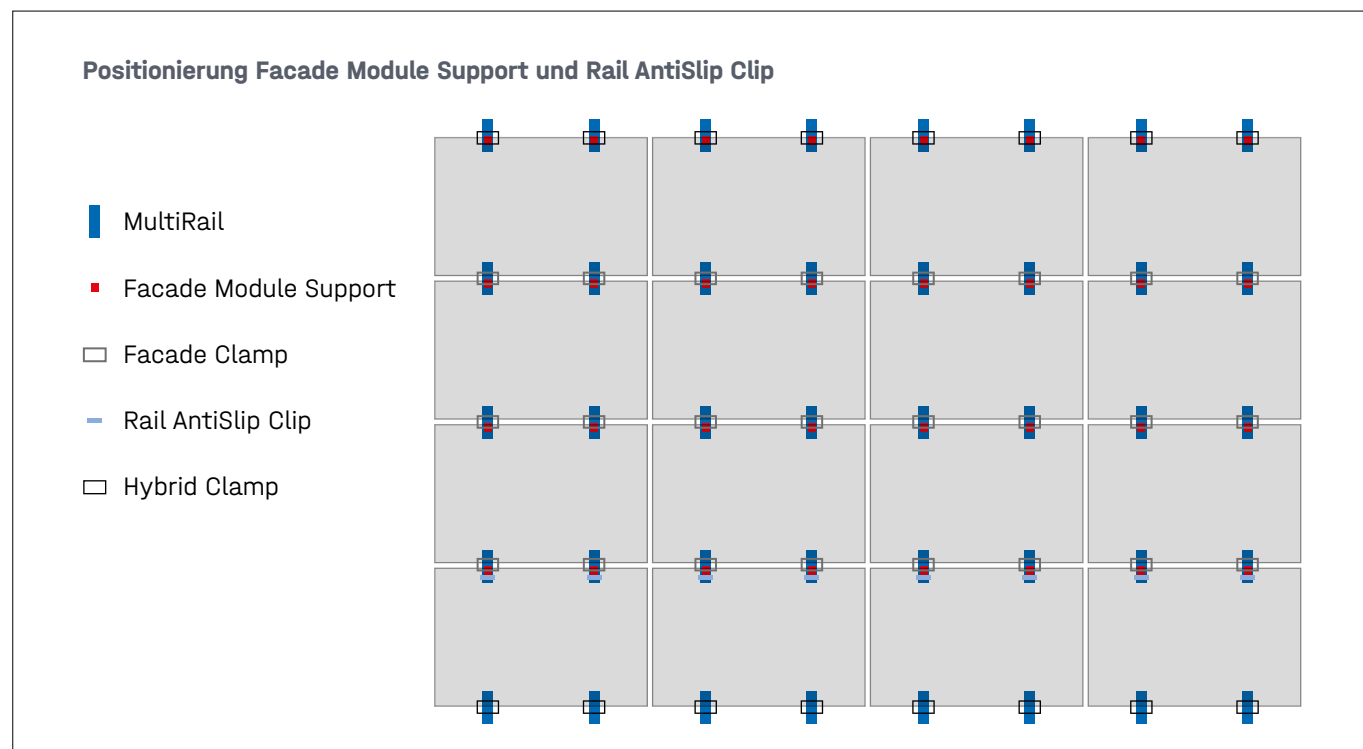


1 2004210
MultiRail 25 CSM

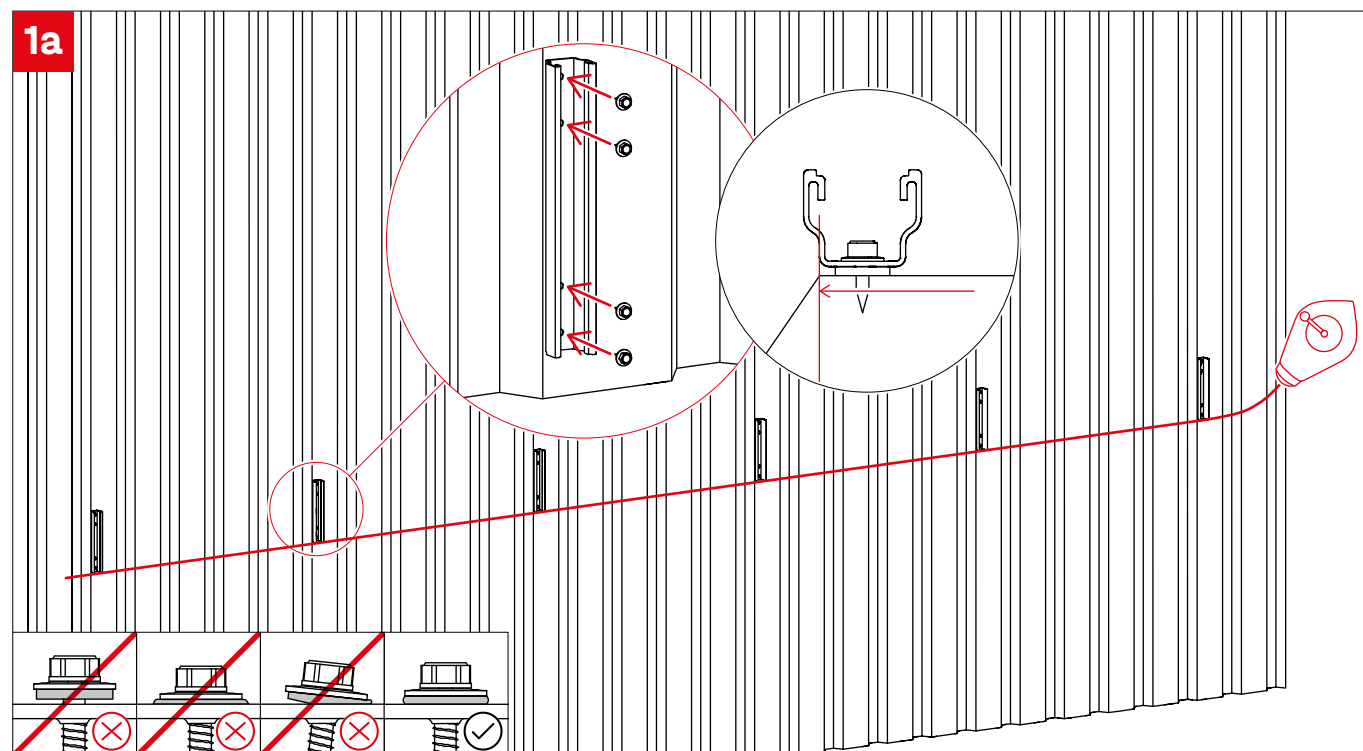
2 1005207
**Thread-forming metal screw
6×25**



Only landscape module assembly permitted!

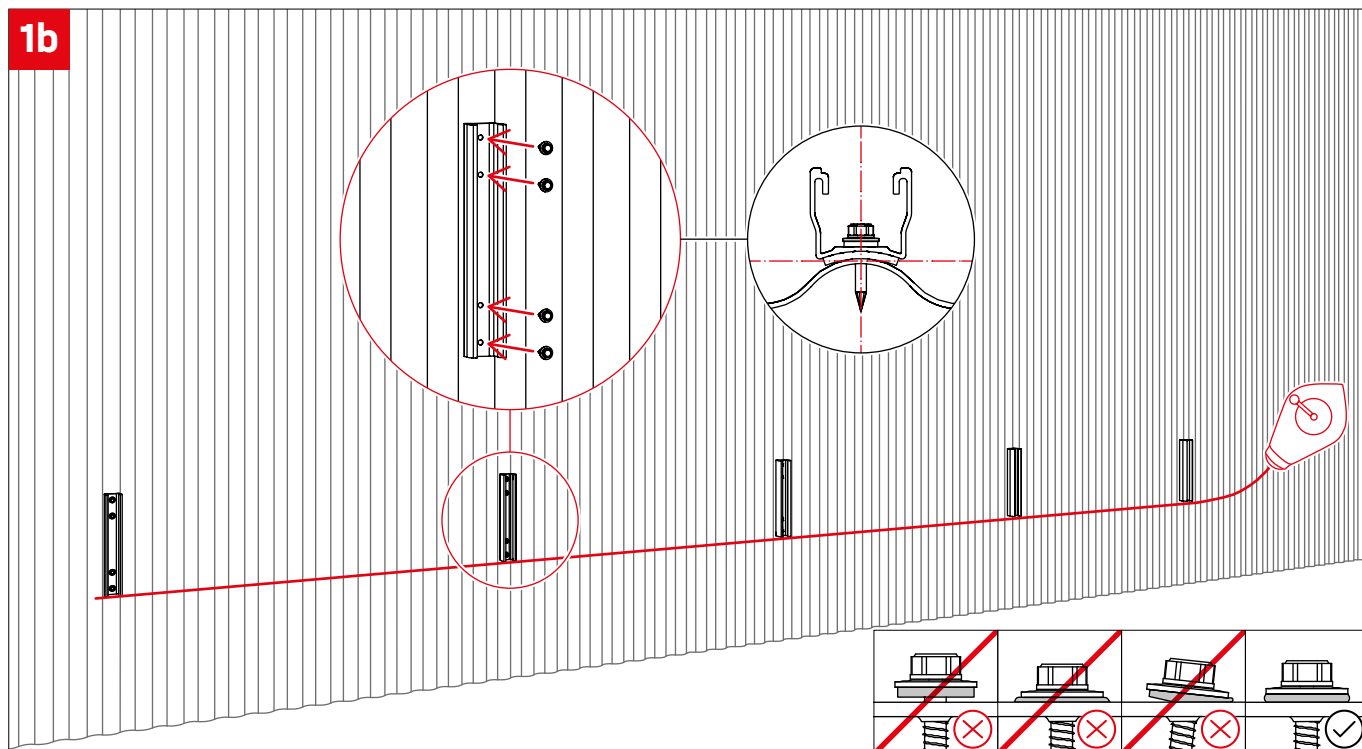


Installation MultiRail 25 on trapezoidal sheet metal



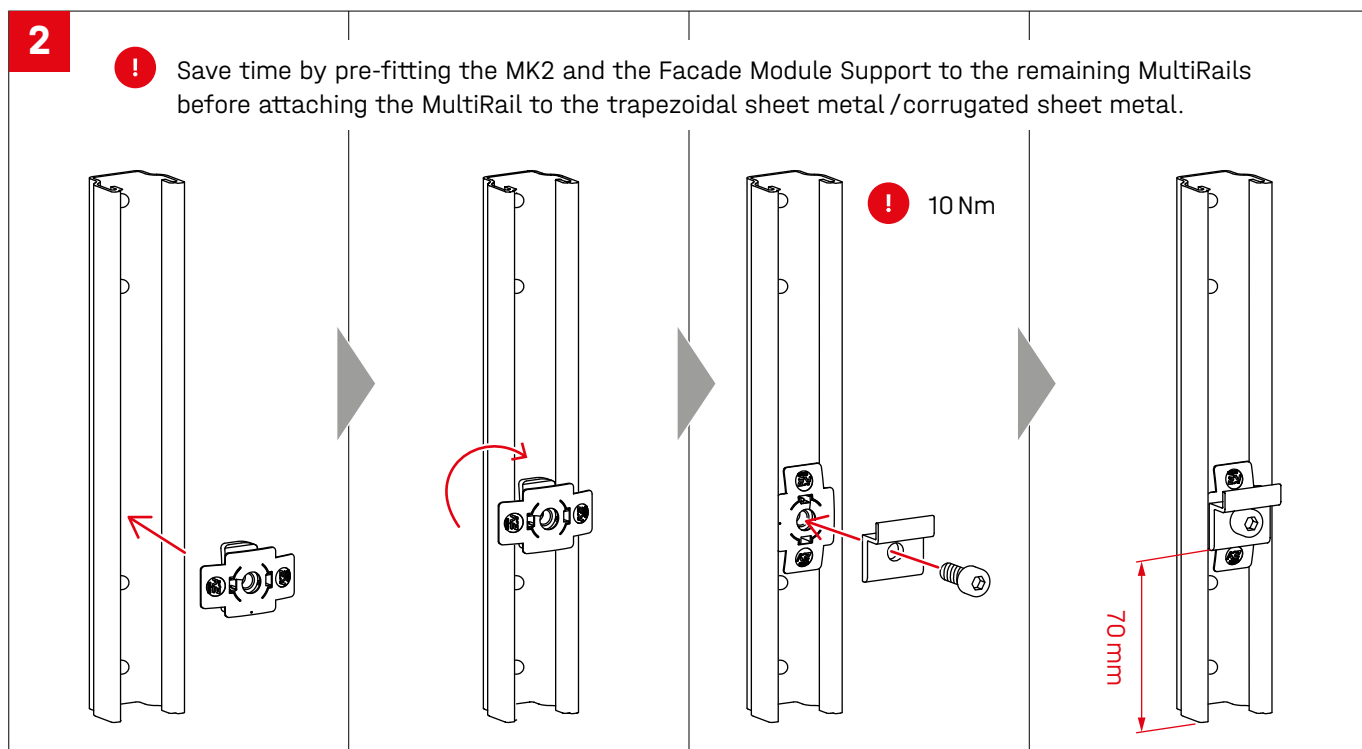
Installation MultRail 25 CSM on corrugated sheet metal

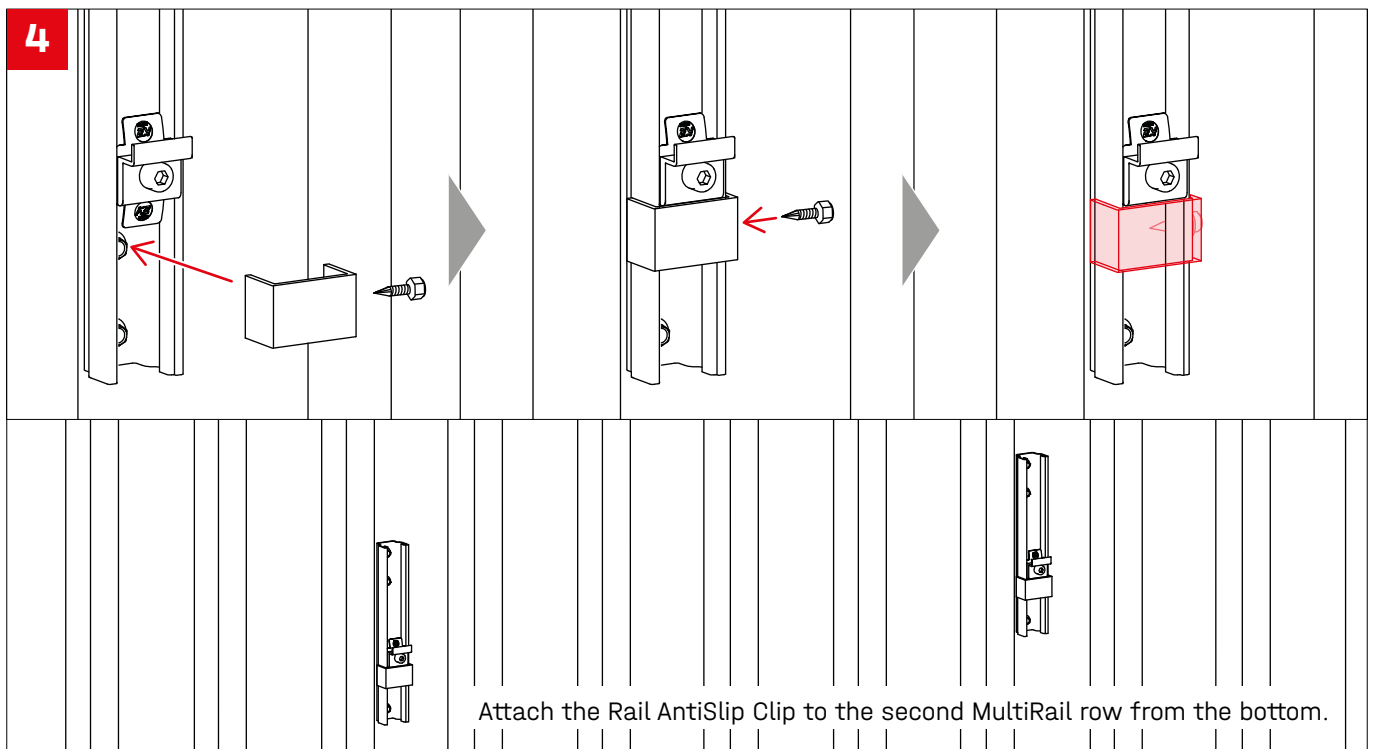
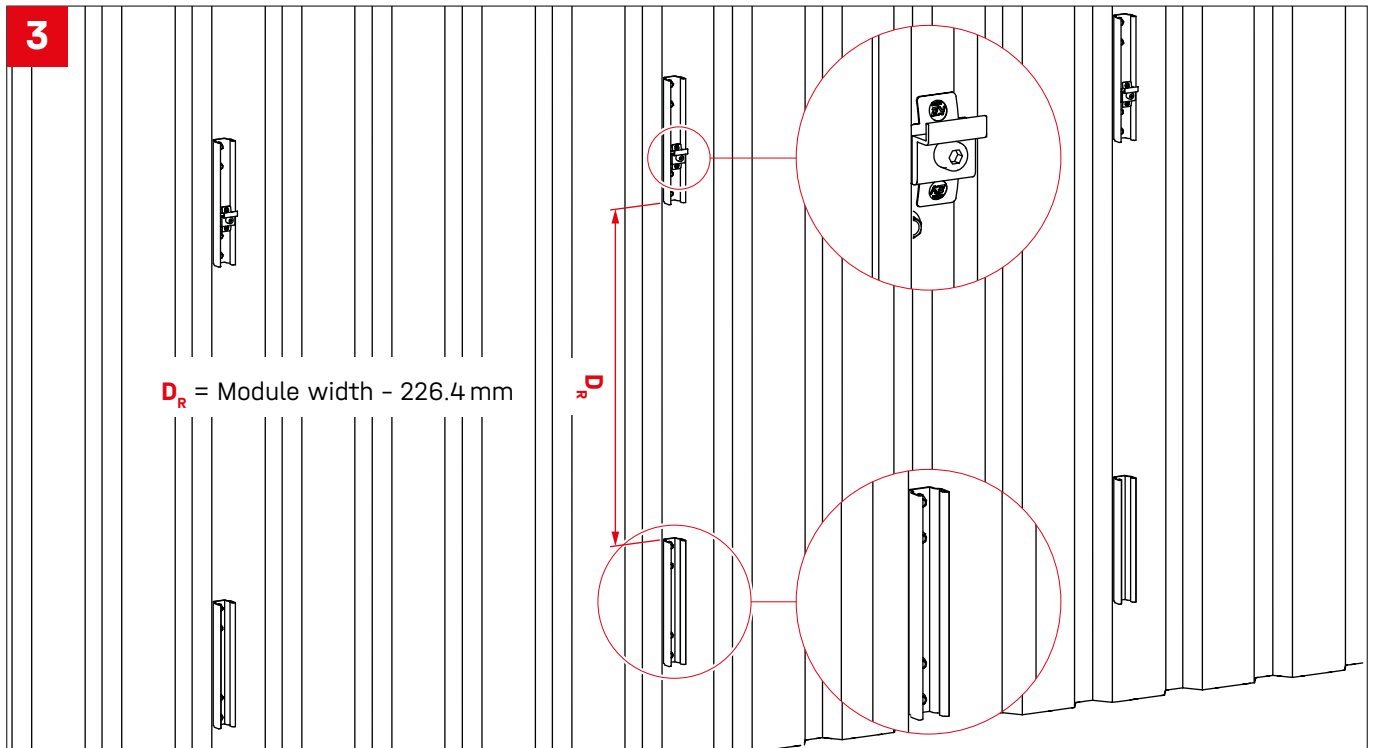
1b

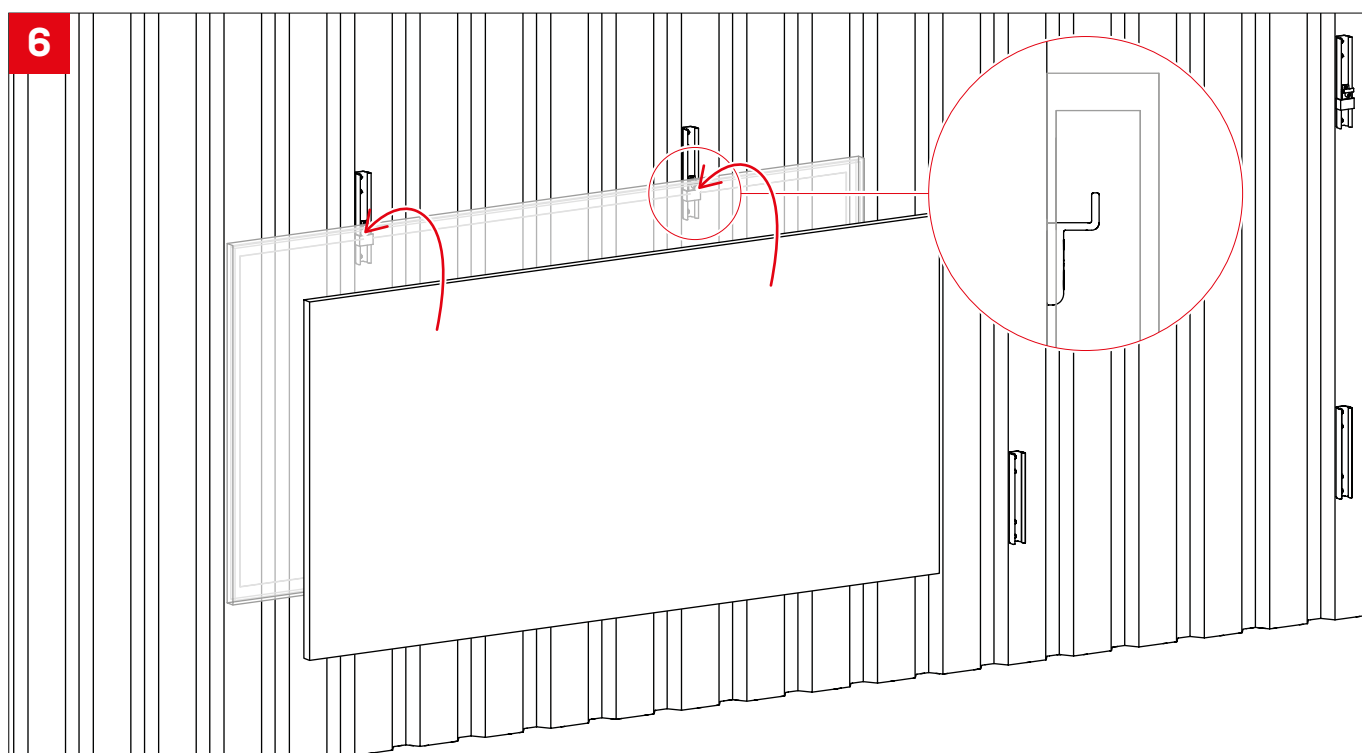
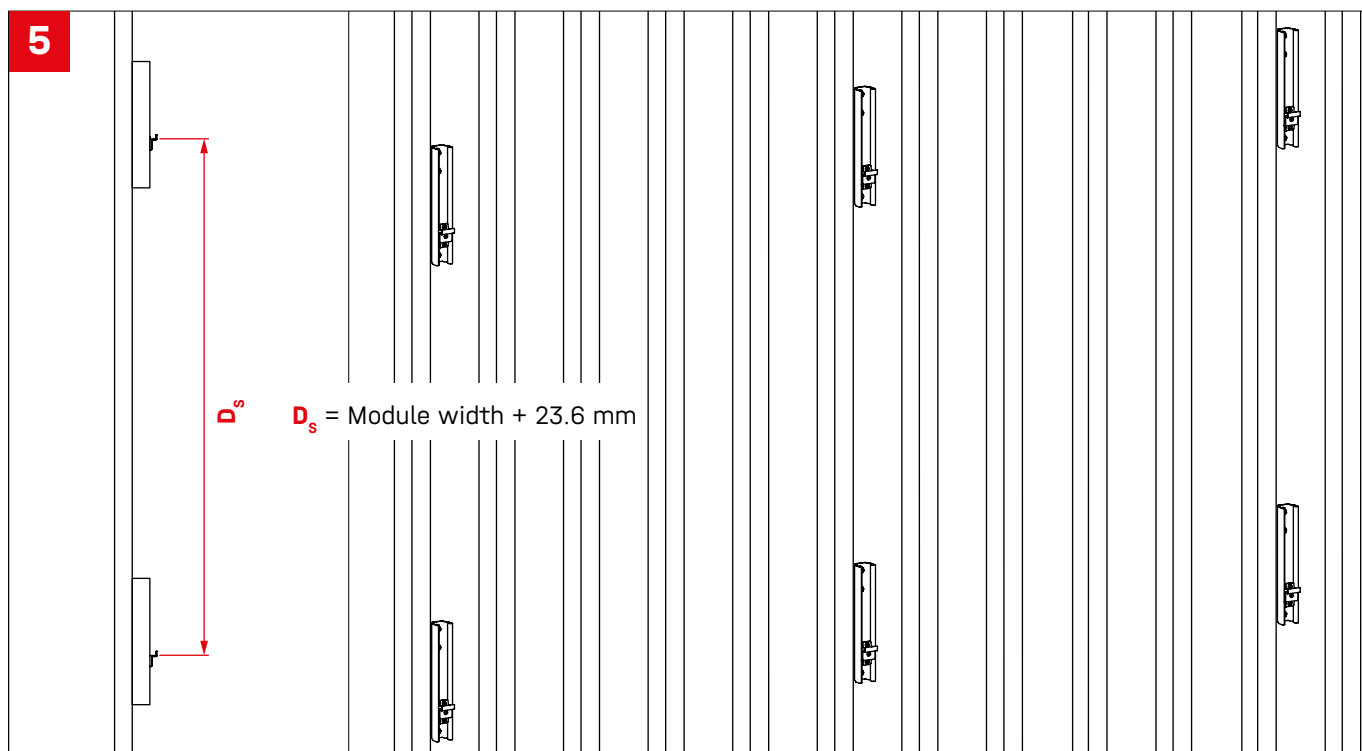


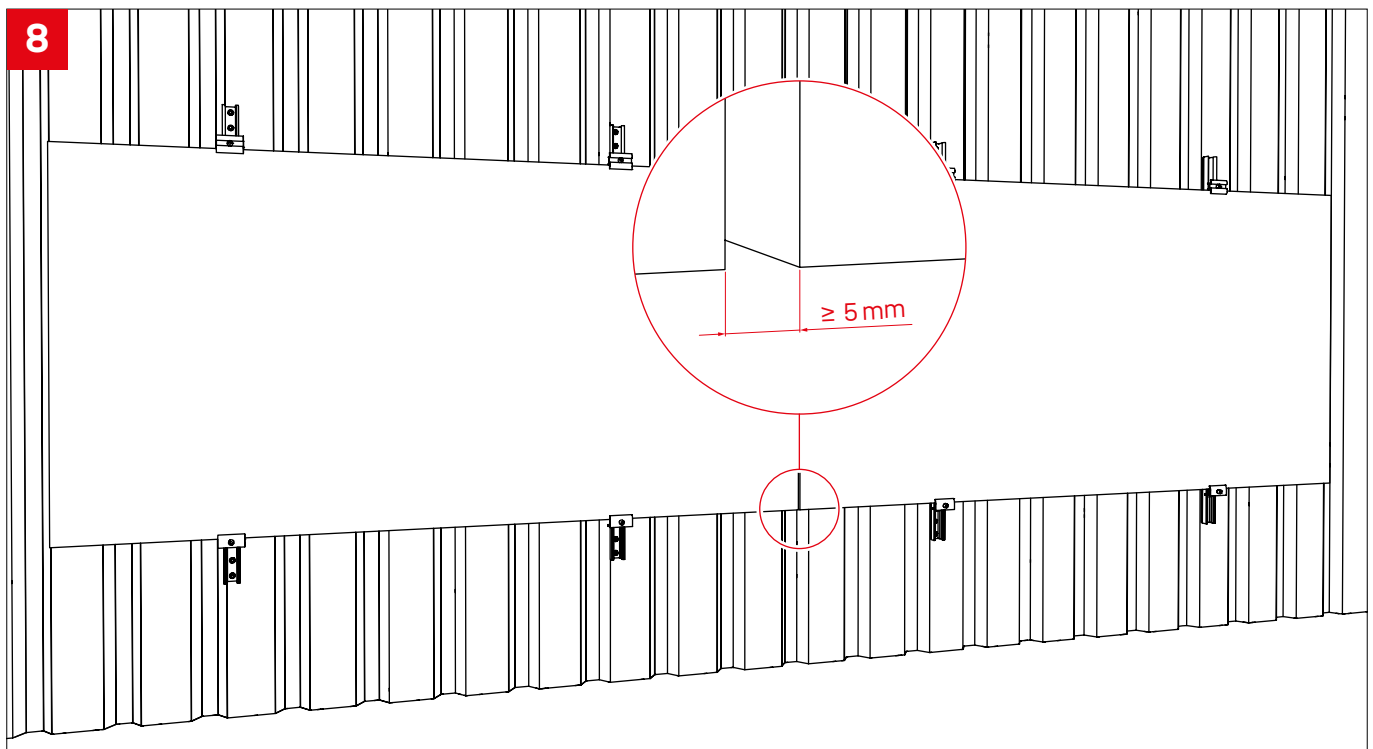
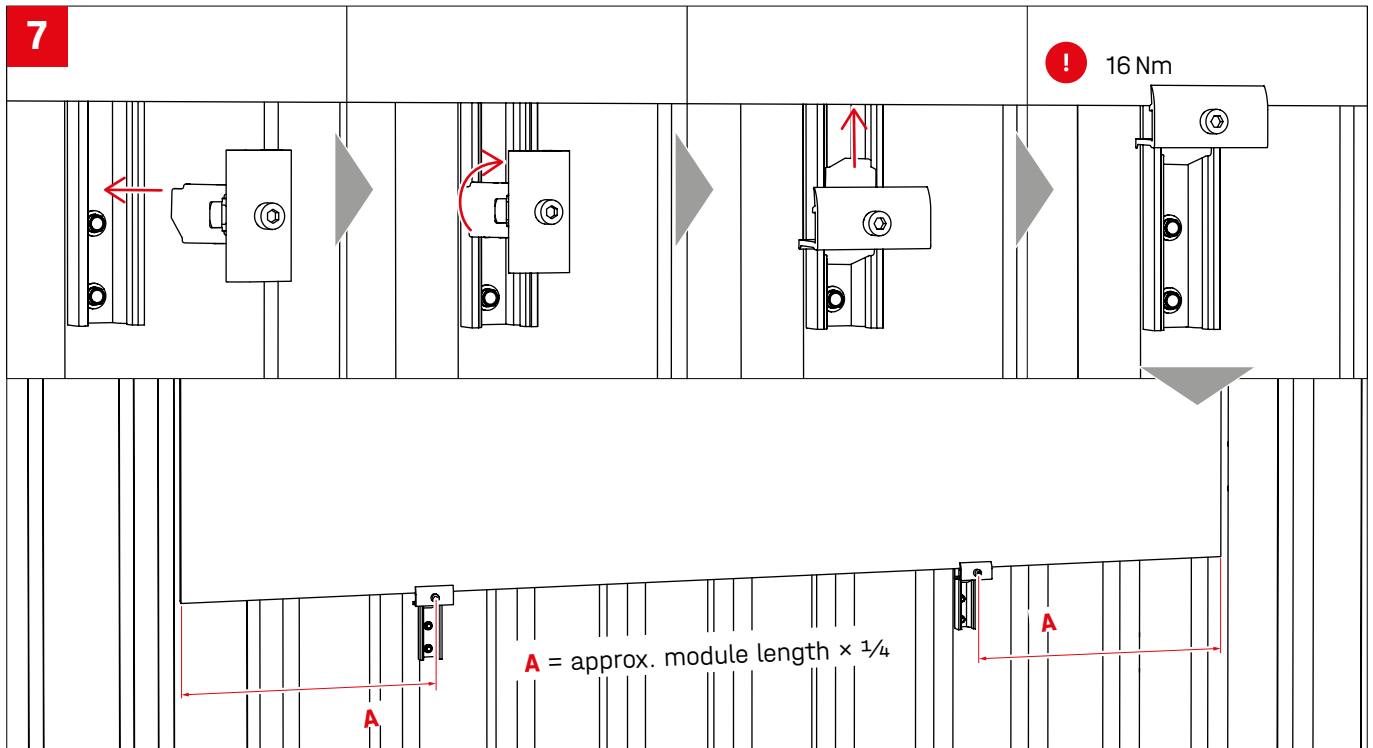
2

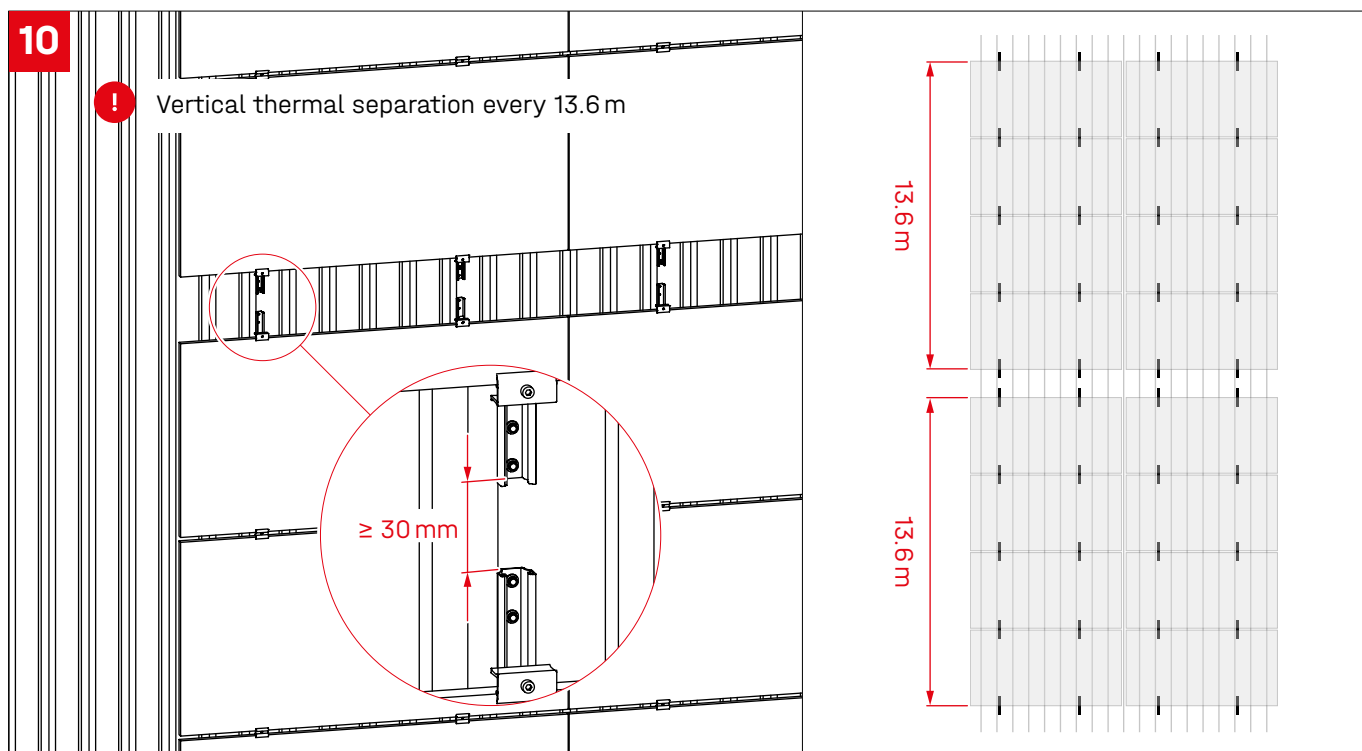
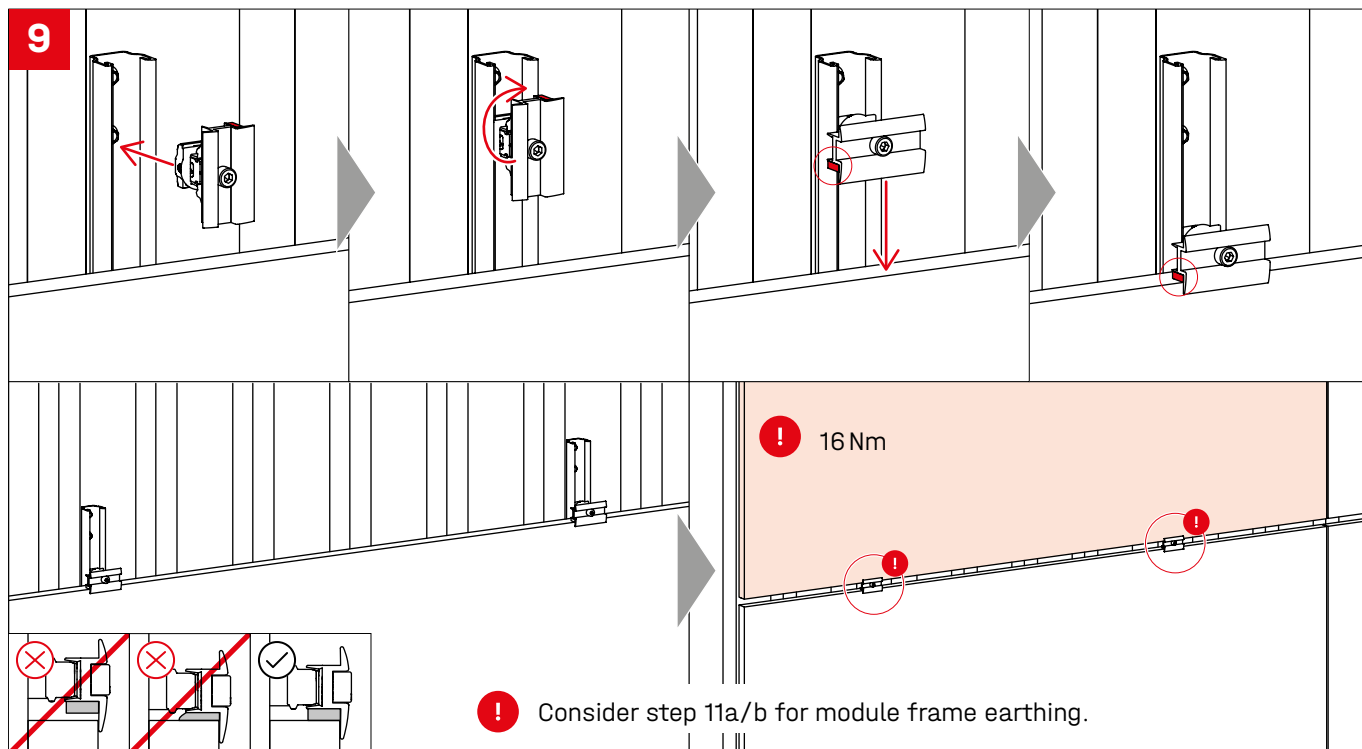
! Save time by pre-fitting the MK2 and the Facade Module Support to the remaining MultiRails before attaching the MultiRail to the trapezoidal sheet metal / corrugated sheet metal.



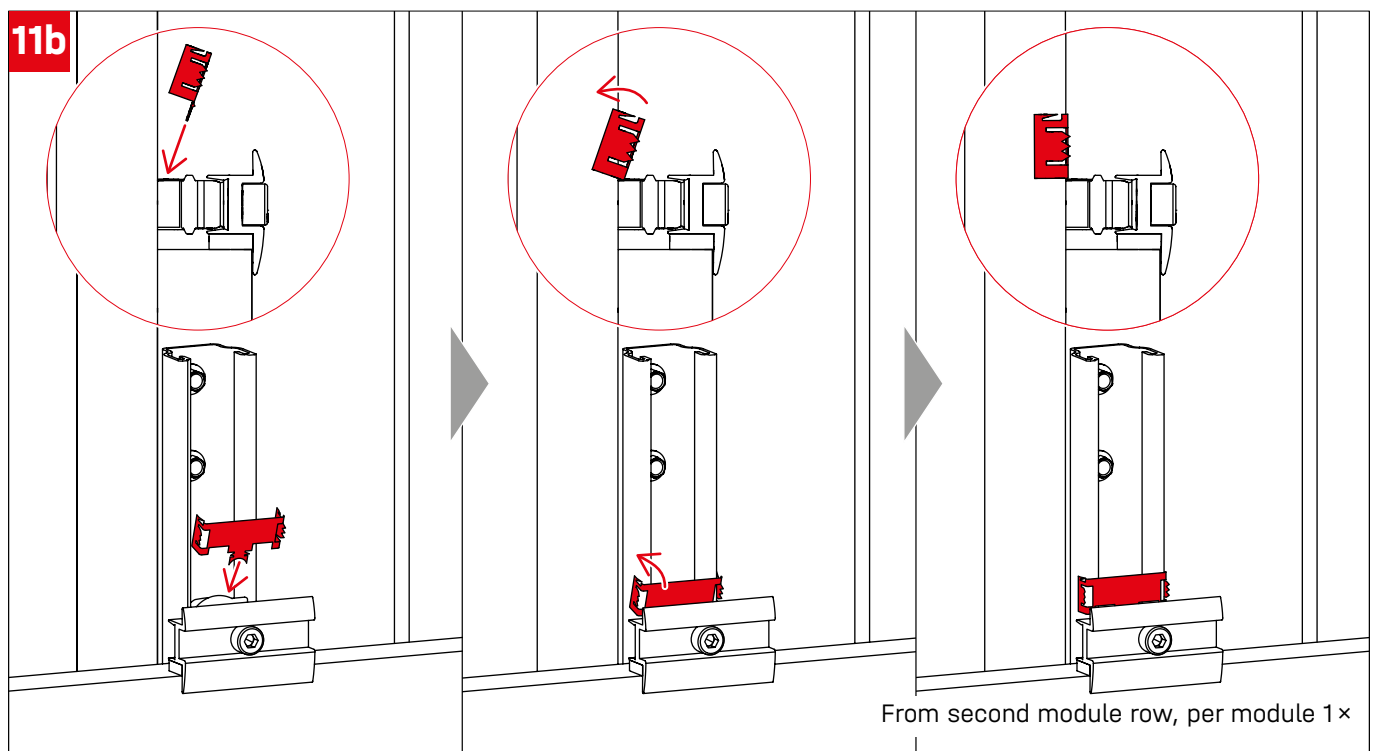
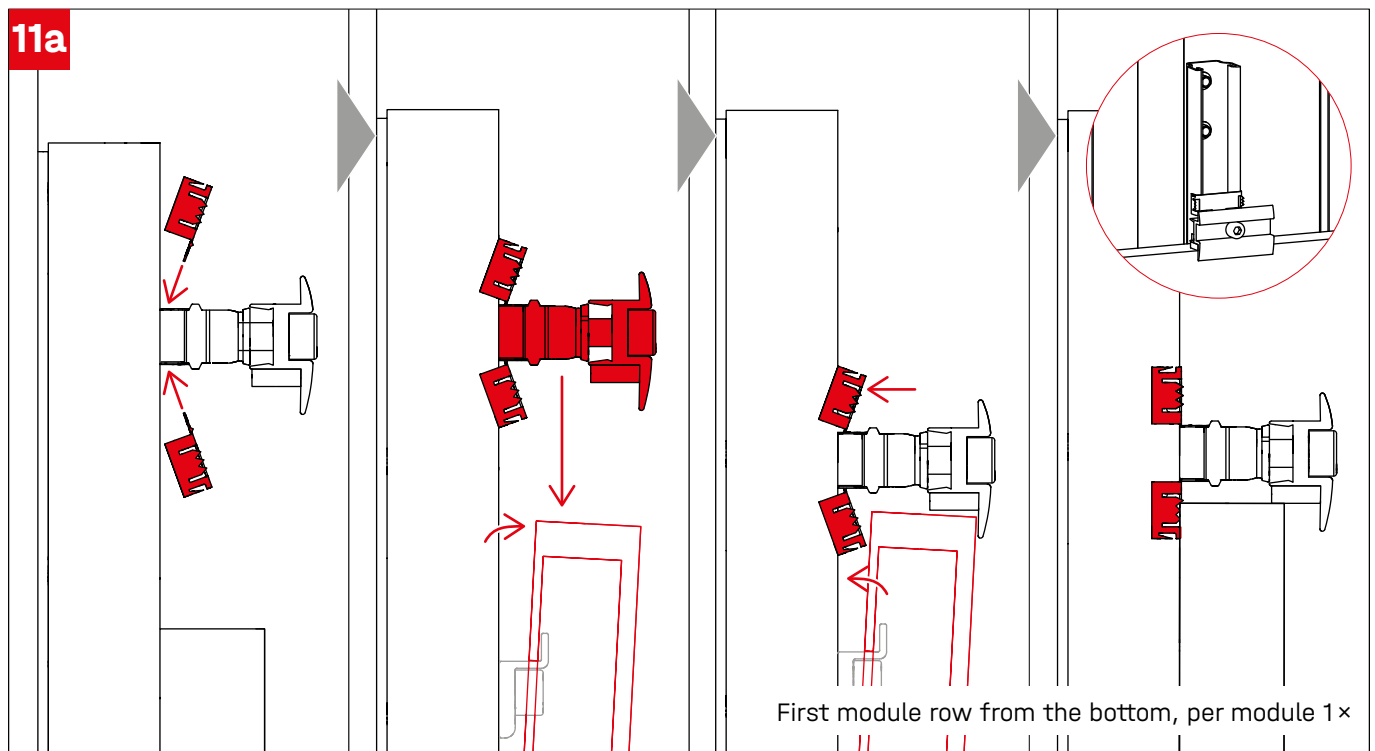








Optional - TerraGrif QL



Thank you for choosing a K2 mounting system.

Mounting systems from K2 Systems are quick and easy to install. We hope these instructions have helped. Please contact us with any questions or suggestions for improvement. Our contact data:

- k2-systems.com/en/contact
- **Service Hotline: +49 (0)7159 42059-0**

Our General Terms of Business apply. Please refer:
k2-systems.com

K2 Systems GmbH

Haldenstraße 1 · 71272 Renningen · Germany
+49 (0) 7159 - 42059 - 0 · info@k2-systems.com · k2-systems.com

WallPV MultiRail FacadeClamp Assembly EN V1 | 0725 · Subject to change
· Product illustrations are exemplary and may differ from the original.



Connecting Strength

k2-systems.com